



Vivarium Doors

Single Swing -Seamless Molded Fiberglass
Non Fire Rated, Manual or Automatic.



Leading-edge technology for superior hygiene performance.

Dortek's hygienic door systems are manufactured using cutting edge technology and a revolutionary closed mold process. This creates a strong, uniform product with no seams or joins on the door surface and no voids, holes or crevices within for bacteria to harbor.

We are market specialists; with over 50 years' experience in providing high performance door solutions to the world's leading Research labs, Pharmaceutical and Healthcare.

We understand the unique and stringent requirements of high hygiene environments, air flows, work flows, contaminants and local regulations. We know what works and what does not. Our product portfolio offers a comprehensive single source for all doors, frames, hardware and automations on a project.

All Dortek products can be supplied as fully-finished doorsets with the door leaf, frame and hardware for a complete, factory-made assembly designed to meet your exacting performance requirements.

EXTREME DURABILITY

Exceptionally strong, lightweight and impact resistant. These doors outperform painted hollow metal and stainless steel

SUPER CHEMICAL RESISTANT

Smooth, sealed, non absorbent surface which is easy to clean. Excellent resistance to most disinfectants, solvents and strong chemicals, including H2O2.

OPTIMUM PERFORMANCE

Proven to maximise efficiency, safety and hygiene in the most demanding environments. These doors will not rot, rust, swell, warp or corrode. Designed to meet FDA and cGMP requirements.

ULTRA CLEAN

Completely smooth and seamless gelcoat finish which is non porous and non shedding. Free from organic materials, ledges, recesses or right angles, for flawless hygiene.

100% WATERPROOF

Inorganic closed cell core which does not corrode or absorb moisture. Remains unaffected from exposure to water, steam and chlorine; even after decades of use.

UNCOMPROMISING QUALITY

Engineered to offer supreme quality and reliability. We can offer up to a 25 year guarantee on our doorblades.*

COMPLETE TURNKEY SYSTEM

Dortek provides complete access solutions which are individually-crafted to meet your specification.

We offer a choice of colored door panels, frames, hardware, vision panels, access controls, automations and interlocking. automations an interlocking.

***Terms and Conditions apply: contact us!**



TECHNICAL FEATURES

DOOR PANEL

- Seamless fiberglass encapsulating a non-organic, high density polyisocyanurate foam core
- Total thickness 1.57" (40mm) or 1.75" (44mm)
- internal aluminum reinforcement for hardware fastening
- Moisture absorption zero

SIZES

- Molded in 11 standard widths and four heights
- Also available for special order in any non-standard height.

FRAMES

Recommended: Stainless Steel frames to wrap the opening:

- Extended back stop to protect back edge of the door when open
- Hidden fastening points
- Foam injected during install to remove any voids and provide extra rigidity
- Available in 316 grade stainless

FINISH

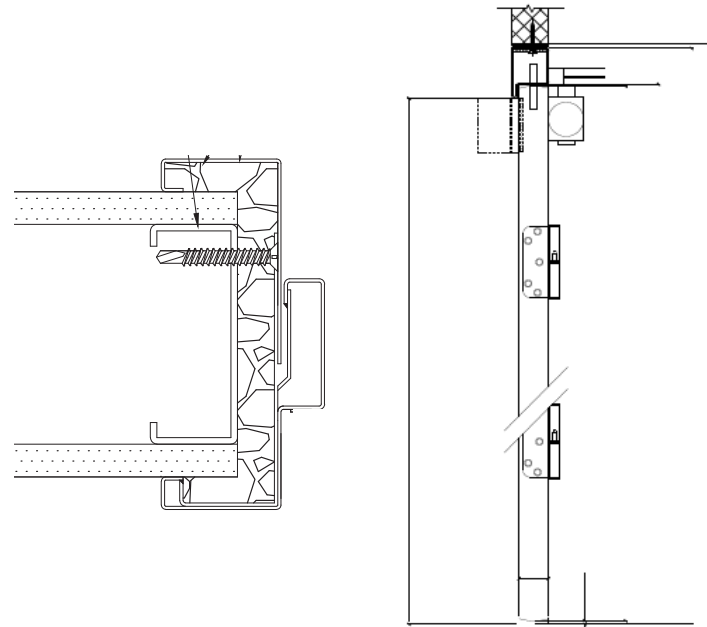
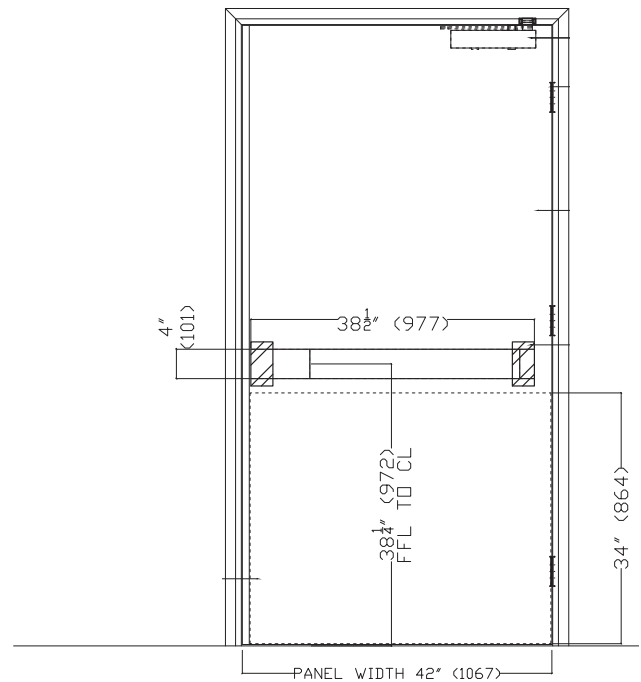
- Easy to clean, maintenance free, smooth, non porous, gelcoat surface with built-in choice of 20 colors
- Available with antibacterial protection
- Designed to withstand all typical cleaning

OPTIONS

- Factory-fitted hardware and door protection
- 20ga stainless steel edge protection
- Flush vision panels with integral blinds, smart glass or x-ray and laser protection
- Automations & Interlocking.

GENERAL

- Doors are supplied pre-hung & fully fitted-out for easy site installation



USA

Dortek Inc
10 East 6TH Avenue, Suite 310
Conshohocken
Pennsylvania
PA 19428

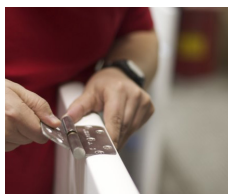
Tel Office: +1 610 234 7276

Sales: +1 617 401 8226

Email: us-sales@dortek.com



**Seamless
Fiberglass Door
Panels**



**Factory
installed
Hardware**



**Flush
Vision
Panels**

