



Applications:

Veterinary Clinics

Rescue Centres

Holding Facilities

Veterinary Doors

Hygienic, Low Maintenance and Timber Free





50 YEARS EXPERIENCE

IN HYGIENIC ENVIRONMENTS

Ultra Clean GRP Construction

Completely smooth and seamless gelcoat finish which is non porous and non shedding. Free from organic materials, ledges, recesses or right angles, for flawless hygiene. Proven to maximise efficiency, safety and cleanability in the most demanding environments.

Veterinary and animal care facilities face the same hygiene concerns and focus as human health care facilities, plus they have the added challenges of managing the animal patients, zoonotic pathogen threats and also odour control. With such stringent requirements, facilities need hygienic interior finishes with proven long term durability that can also withstand rigorous and frequent cleaning requirements.

Every veterinary clinic, hospital, office, and shelter is different, and the broad spectrum of animal size and combination practices, result to having different requirements in terms of interior finishes. And while some locations offer surgical or specialty services, others focus on general veterinary practice and initial patient exams. Below are some key performance requirements to consider, when designing veterinary and animal welfare facilities:

Cleaning and Chemical resistance

✓ Surfaces should be non-absorbent, non-toxic, easy to clean, should not harbour bacteria and other pathogens and not support microbe or fungal growth. Veterinary surgical areas, animal housing, examination and treatment rooms are subject to frequent cleaning regimes, often with harsh disinfectants and other solutions. Interior products should be specified that have excellent chemical, solvent, acid, and alkali resistance, as well as the surface being impervious to urine, animal waste, and other fluids.

✓ Products should resist absorbing stains and odours. The choice of doors in animal and veterinary facilities can vary greatly, but one thing in common is: Hygiene is paramount. Doors should be both impermeable and resistant to animal waste, odour absorption, staining and the harsh cleaners used for sanitation. Mud, dirt, urine, blood, vomit and faeces can easily be deposited on doors, so it is important that the door surface is quick and easy to clean.

Durability and Cost Efficiency

✓ Products must be durable; generally the more durable the finish the greater the cost. Consideration should be given the intensity of traffic using the area or room. It is also important to consider the types of animals using the facility. Balancing initial cost and the cost of maintaining the facility periodically will vary depending upon the requirements of each individual project.

Hygiene

✓ The use of organic-based products (e.g. timber) should be avoided, as should products that have visible seams or joins. Organic products can harbour bacteria, germs and pathogens, giving them a breeding ground in which to grow. Composite products, like GRP, are inorganic and, therefore, are not an attractive food source for microbes and therefore do not encourage their growth and proliferation. Joins and seams (common in typical timber or encapsulated doors) can harbour odours and germs. This includes the windows or vision panels.

Water Resistance

✓ Doors should be selected that can withstand frequent washing (even jet washing) and, to prevent long-term damage, the core should be inorganic and also water resistant. Surfaces in veterinary and animal facilities receive frequent cleanings with harsh sanitizers. Some areas may even get hosed down or power washed. While seemingly impervious during initial months, finishes with a timber-based core can get worn away from the scrubbing action and cleaning chemicals over time, eventually allowing for the absorption of contaminated water and other fluids into and through the door covering, where they can remain indefinitely and cause further damage. This is far from ideal in any facility, least of all in a veterinary healthcare environment.



Dortek timber-free GRP doors, fit for any Veterinary facility

Dortek have created a range of GRP doors, focussing on the health, efficiency and profitability and hygiene of both the users and animals within the facility. This makes choosing Dortek a long-lasting investment for any practice.

We have a range of hygienic, timber-free doors in your facility, whether they are installed in:

- Private or public practice
- Small or large clinic
- General veterinary medicine
- Specialty animal hospital
- Animal referral facility
- Emergency/critical care
- Equine/mixed animal practice
- Universities or schools of veterinary medicine

Our innovative GRP doors, created with evidence based design (EBD) principles in mind, can contribute to a healthier, lower stress environment for animals, patients and staff throughout the facility. Veterinary practices should use hygienic, timber-free GRP doors in many areas, including:

- Exam and treatment rooms
- Triage and surgery rooms
- Animal patient boarding areas
- Electronic equipment and monitoring areas
- ICU and isolation facilities
- Hazardous medical waste storage spaces
- Pharmaceutical storage areas

Dortek can even offer GRP doors with lead-lining for use in enhanced imaging modalities, such as digital radiology, CTs and MRIs. Installed with a combination of Dortek lead-equivalent or our patented Intavista laser-proof privacy vision panels, facilities can have a true single source door solution, all backed up with over 50 years of design and installation experience and expertise.



Dortek GRP doors are hygienic and easy to keep clean

Dortek's GRP doors are inorganic, water resistant and have a naturally smooth finish. They are an ideal solution for a variety of applications, with benefits including:

- Excellent, tested, chemical, acid and alkali-resistance
- Easy-to-maintain – no painting or redecorating of the doors or frames is required
- Withstands exposure to harsh disinfectants and sanitizers



Our GRP doors are seamless and inorganic

PVC-encapsulated doors (so often specified in high hygiene environments) have a join, usually along the leading edge of the door – the part of the door leaf that is probably most susceptible to damage. These joints are often the points that fail first and collect dirt; Damage to the door can also expose the organic timber core, allowing the timber to absorb substances to which they are exposed. Specifying a DorteK GRP door means choosing a door that is completely seamless.

DorteK GRP doors:

- Are seamless and monolithic, so the surface will not harbour germs or bacteria.
- Inorganic – they do not harbour germs or bacteria, even if the core is exposed
- Impermeable to animal waste – DorteK GRP doors will not absorb odours

Water resistant

The requirement for frequent cleaning is a typical characteristic of many veterinary and animal facilities. Once again, DorteK GRP doors are the ideal solution offering:

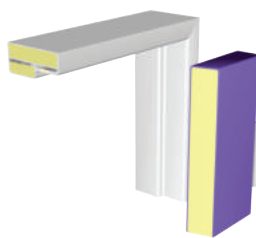
- Water resistance – they do not have the ability to absorb or maintain moisture or penetration by water
- A fully washable surface
- Steam-cleanable and can also be jet washed
- Dimensional stability – they are not affected by temperature changes or moisture
- A wide range of standard colours, or an RAL or BS colour if required

Excellent durability and whole-life costs

DorteK GRP doors offer a winning combination of superior durability and proven competitive whole life costs. Our GRP doors:

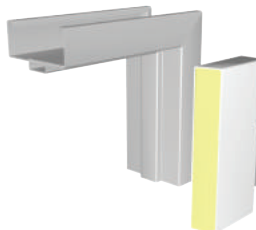
- Are up to 7 times the flexural strength of steel, yet are less than half the weight of typical vinyl/PVC encapsulated timber-cored doors
- Can be supplied with a wide range of ironmongery, suitable for any area in your facility
- Can be supplied with sacrificial door protection in a variety of finishes and colours
- Can be offered with a performance warranty of up to 25 years, subject to routine inspection and maintenance

Door frame options



GRP frame

Fire rated GRP frame with patented concealed intumescent strip



Stainless steel frames in various grades

Fire rated stainless steel frame available as an option

Why use DorteK Hygienic Doors

- Fully encapsulated seamless construction
- Free from voids, ledges or crevices which harbour bacteria
- Fire, water, x-ray and chemical resistant
- Designed to cGMP, FDA and EU requirements
- Extremely lightweight, strong and durable
- Will not warp, swell, rust or rot
- Low maintenance, cost-effective solution
- Hinged, sliding, hermetic and automated doors
- Available in a wide range of gelcoat colours



Your trusted partner for access solutions



DorteK are recognised throughout the markets we serve for our commitment to innovation, quality and customer care.

Our clients rely on our technical expertise to find the right solution for every project and every door and to deliver that solution on time and to budget.

DorteK provide all the services and products that are needed to deliver a comprehensive solution. All DorteK doors can be supplied as complete door systems with the door leaf, frame, hardware, automations and vision panels to provide a fully-integrated system.



Hygienic Hinged Doors

Our hinged doors are ideally suited to areas requiring maximum hygiene, cleanability and durability. They are extremely strong and durable, yet light and easy to operate.



Hygienic Sliding Doors

Our sliding doors are available in a range of configurations to suit the functional needs of any application. From single and bi-parting doors to fire, sound or x-ray proof doors.



Hermetic Sealing Sliding Hygienic Doors

Our hinged doors are ideally suited to areas requiring maximum hygiene, cleanability and durability. They are extremely strong and durable, yet light and easy to operate.



Hermetic Sealing Sliding Glass Doors

Featuring a unique, patented track system which enables the door to seal perfectly when closed, helping to reduce cross contamination and air handling costs.



Glass Hinged Doors

The combination of a toughened glass door with the clean lines of our stainless steel frame gives a showpiece appearance whilst also maintaining high hygiene.



Glass Sliding Doors

Our glass doors are ideal for maximising visibility for functional use in critical areas of a hospital. Choose from sliding, telescopic, swing, hermetic sealing and touchless options to suit your application and needs.



Transfer Hatches

Specifically designed for cleanroom environments, DorteK's transfer hatches are used to provide a safe and easy means of transfer for materials and products.



Windows & Vision Panels

DorteK vision panels can be integrated with our doors to offer enhanced privacy while lowering infection risk and eliminating cleaning costs. Our windows and vision panels can be offered with smartglass, lead, fire and laser protection.

Veterinary Doors

United Kingdom

Dortek Ltd
St Mark Street, Hull
East Yorkshire
HU8 7ED
England

Tel: +44 (0) 1482 226848

Email: info@dortek.com

USA

Dortek Inc
200 Barr Harbor Drive
4th Floor
Conshohocken
Pennsylvania
PA 19428

Tel Office: +1 610 234 7276

Sales: +1 617 401 8226

Email: us-sales@dortek.com

Ireland

Dortek
Bond Street
Wicklow Town
County Wicklow
A67 HE26
Ireland

Tel: +353 (0) 404 67101

Email: info@dortek.com

Sweden

Dortek AB
Box 1510
Södra Dragongatan 26B
SE 27100 YSTAD
Sweden

Tel: +46 (0)411 138 40

Email: info@dortek.se

Singapore

Dortek Hygienic Door Systems Pte Ltd
627A Aljunied Road
BizTech Centre 04-06
Singapore
389842

Tel: +65 67411787

Email: info@dortek.com

Our Product Range:

- Hinged GRP Doors
- Hygienic FRP Doors
- Fire Doors
- X-ray Rated Doors
- Glass Doors
- Hermetically Sealing Doors
- Crash / Traffic Doors
- Industrial Doors
- Windows and Vision Panels
- Transfer and Trolley Hatches

