



## Applications:

Food & Beverage  
Processing

Dairies

Catering Facilities

Infant Nutrition/Dried Milk  
Processing

In-Flight Catering

Bakeries

# Food Doors

Safe, Durable and Hygienic





over  
**50 Years**  
Experience  
in the Food industry

## Your trusted partner for food doors

Dortek offer a wide range of door solutions specifically for the food sector. For over 50 years Dortek's doors have been used extensively by major food organisations around the world.

Used by everyone throughout your facility, doors can be a major source of contamination spread, if incorrectly specified. Dortek's range of doors meet the increasing standards of hygiene, food safety and fire insurance requirements of the food industry.

Substantial investment into manufacturing technology, product development and customer relationship programmes ensure that all our customers receive the highest possible levels of service and products from manufacture through to installation.



## Comprehensive access solutions and services from Dortek

- ✓ Full Project Management
- ✓ Design & Planning
- ✓ Customised Solutions
- ✓ Drawings & Scheduling
- ✓ BIM Objects
- ✓ Code & Regulations Compliance
- ✓ Specialist Manufacture
- ✓ Installation, Repairs & Servicing





- ✓ Bacteria resistant
- ✓ Fire resistant
- ✓ Water resistant
- ✓ Impact resistant



## Dortek Hygienic GRP doors

### Engineered for hygiene, strength and longevity

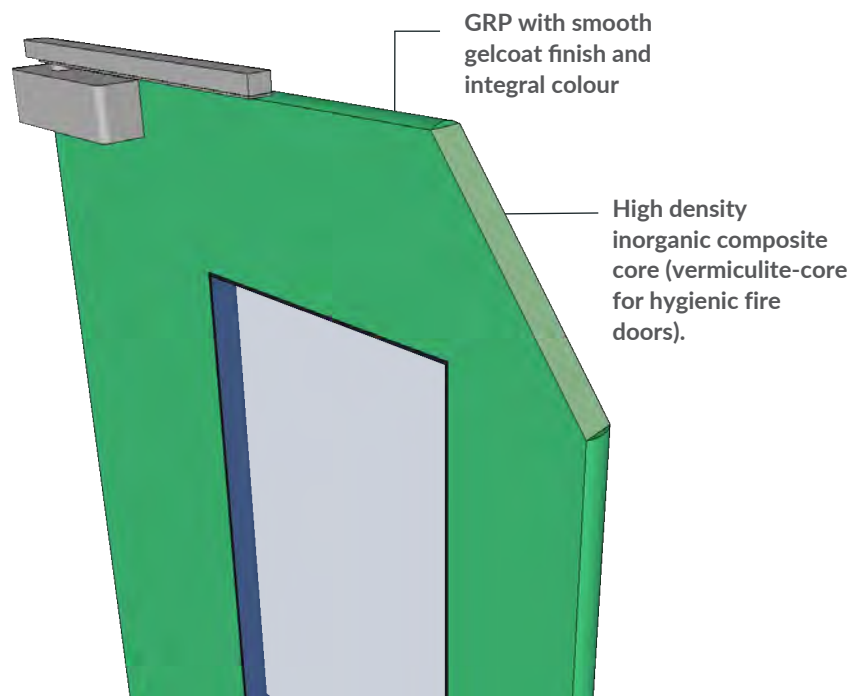
GRP (Glass Reinforced Polyester) is an extremely tough, clean, water resistant material ideal for demanding environments where performance and hygiene are crucial.

Our doors are produced using a unique closed mould process, creating a strong, uniform product with no seams or joins on the door surface and no holes or crevices within.

Designed & constructed to industry leading standards, all our doors comply with the latest fire, DDA, hygiene & safety standards.

#### Key features:

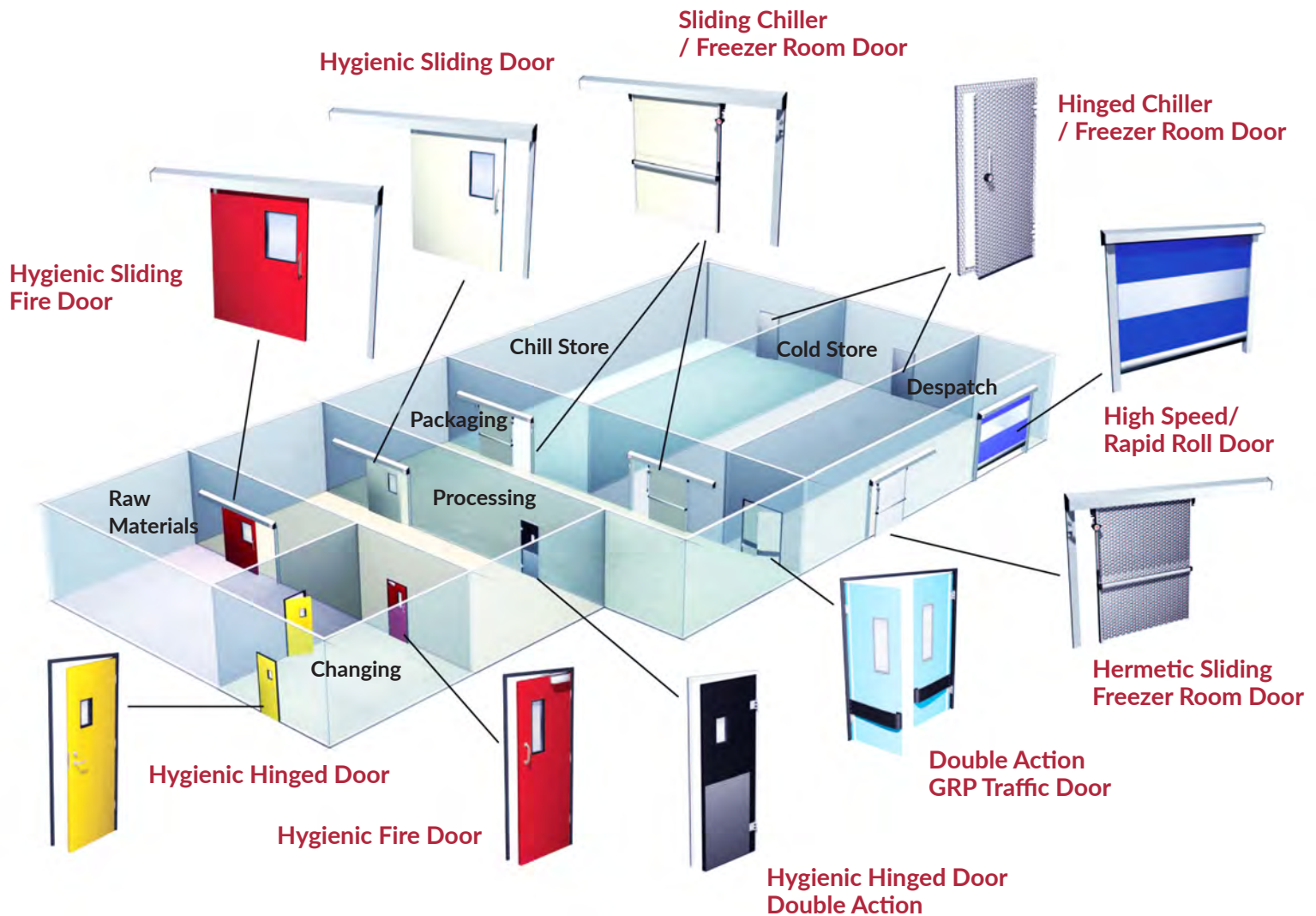
- Fully encapsulated seamless design
- Free from ledges, voids, holes and crevices
- Easy to clean and disinfect
- Fire, water and chemical proof
- Strong, stable, lightweight, low maintenance
- Will not rot, rust, swell, crack or delaminate
- Naturally environmentally-friendly: long life expectancy.





# Innovative opening solutions for a range of food applications

Dortek are chosen by  
The World's  
Largest  
Food Companies



## Dynamic door systems for:

- ✓ Hygiene and cleanability
- ✓ Fire protection
- ✓ Energy savings and conservation

- ✓ Safety and security for personnel, products and equipment
- ✓ Operational efficiency and door life cycle

- ✓ Increased productivity
- ✓ Access control
- ✓ Durability in high traffic areas



**DorteK Hygienic  
GRP Doors**

**VS**



**Steel Doors**

### Reasons TO specify DorteK GRP

- ✓ Smooth, seamless, easy to clean construction. Does not harbour bacteria.
- ✓ Will not rot, rust, swell or warp. Completely sealed and impervious to the elements.
- ✓ Unaffected by moisture, disinfectants, chlorine and VHP (vapourised hydrogen peroxide).
- ✓ Choice of gel coat colours which are moulded into the door. Never needs painting.
- ✓ 42% lighter than steel, making them much safer and easier to operate.
- ✓ Naturally friendly to the environment. Longevity, cleanliness, strength and stability. Low lifecycle costs.
- ✓ Can be guaranteed for up to 25 years against failure due to corrosion, swelling, rotting, delamination or expansion.\*

Resistant to water & chemicals. Will not corrode.

Extremely lightweight blade, minimal wear on hinges.



### Reasons NOT to specify Steel

- ✗ Large seams, voids and crevices which are hard to clean and perfect breeding grounds for bacteria.
- ✗ Rusts from the inside out, causing health and security hazards.
- ✗ Not waterproof and often oxidises when exposed to regular cleaning regimes.
- ✗ Unhygienic painted surfaces which mark and dent easily and require continuous maintenance and upkeep.
- ✗ Heavy to operate. Needs expensive maintenance work & replacement due to excessive wear on hinges / closers.
- ✗ Continuous painting / replacement is harmful to the environment. 25 years could see up to 10 replacement doors.
- ✗ The standard warranty for a steel door is only 1 year & this does not cover failure due to corrosive environments.

Corrosion on door and frame.

Hinge failure due to weight. Unhygienic crevices & rusting.



\* DorteK door blades are subject to a 25 year guarantee, assuming normal wear and tear. Conditions and usage must be in accordance with our terms and conditions.

# Product Selector

## Product Selection

Dortek doors are designed with safety, style and functionality in mind. Our doors are available in a range of standard or custom sizes, colours and configurations to suit your environment.

## Installation & Servicing

All installations and service calls are carried out by our own fully-trained engineers. Please contact us to find out more about our range of service contracts.



## Hygienic Hinged Doors

Our hinged doors are ideally suited to areas requiring maximum hygiene, cleanability and durability. Our doors are free of timber and other organic materials that promote bacterial growth. They are extremely strong and durable, yet light and easy to operate. Available as singles or pairs, single swing or double swing.

## Automations

Our automations are designed to provide safe, efficient and convenient access.

Our systems can be connected to many types of activation devices from a basic push button to a fully-integrated building management system.



## Hygienic Fire Doors

Dortek's fire doors are designed, tested and certified to meet the most stringent fire certifications. We can achieve a 5 hour fire rating and have attained fire certifications to meet over 50 worldwide standards. Our patented built-in intumescent strip means that our fire doors are ideal for hygienic environments as the strip is not exposed.



## Hygienic Sliding Doors

Our sliding doors offer the same hygiene and safety features of our hinged doors, but with the added benefit of wider openings on a durable runner system. Dortek doors have no ledges, recesses or right angles where dust or bacteria can be trapped and grow. Our sliding doors are available as single or bi-parting doors.





### Double Action GRP Traffic Doors

Dortek's GRP swing crash doors have been designed for high traffic areas. All doors are lightweight, durable and easy to operate. Their strong, hard-wearing and long lasting construction requires minimum maintenance. The smooth, non-porous gelcoat finish makes them easy to clean and resistant to water and cleaning chemicals.



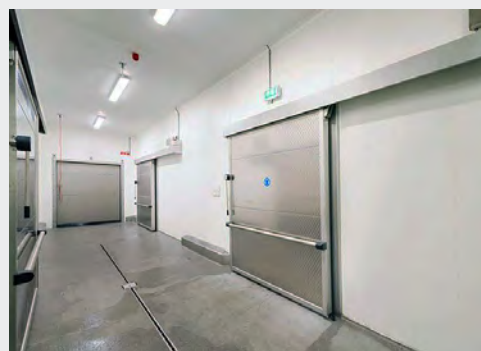
### Hinged Chiller / Freezer Room Doors

Airtight hinged doors for chiller and freezer rooms suitable for temperatures as low as -25C. These doors have a completely smooth surface, making them easy to keep clean. The doorblade is 80mm thick and includes a galvanised steel plate which has been finished with a polyester coating. The unique closing system provides an airtight seal for the room. This prevents unwanted air and moisture flows and is energy-efficient as it reduces leakage.



### High Speed / Rapid Roll Doors

Designed to save energy and create better working conditions where fast access is required. Dortek's range of high speed doors are eco-efficient high-speed internal and external doors designed to prevent cross contamination, save energy consumption and reduce the sound of noisy machinery.



### Sliding Chiller / Freezer Room Doors

Airtight sliding doors for chiller and freezer rooms suitable for temperatures as low as -40C. These doors have a completely smooth, easy to clean surface, ideal for hygienic environments. The doorblade is available in food safe polyester coated in white or stainless steel. The airtight seal and easy operation means less energy wastage. Doors can be provided with up to 90 minutes fire rating (depending on door type and size).

# Food Doors

## United Kingdom

**Dortek Ltd**  
St Mark Street, Hull  
East Yorkshire  
HU8 7ED  
England

**Tel:** +44 (0) 1482 226848  
**Email:** [info@dortek.com](mailto:info@dortek.com)

## USA

**Dortek Inc**  
200 Barr Harbor Drive  
4th Floor  
Conshohocken  
Pennsylvania  
PA 19428

**Tel Office:** +1 610 234 7276  
**Sales:** +1 617 401 8226  
**Email:** [us-sales@dortek.com](mailto:us-sales@dortek.com)

## Ireland

**Dortek**  
Bond Street  
Wicklow Town  
County Wicklow  
A67 HE26  
Ireland

**Tel:** +353 (0) 404 67101  
**Email:** [info@dortek.com](mailto:info@dortek.com)

## Sweden

**Dortek AB**  
Box 1510  
Södra Dragongatan 26B  
SE 27100 YSTAD  
Sweden

**Tel:** +46 (0)411 138 40  
**Email:** [info@dortek.se](mailto:info@dortek.se)

## Singapore

**Dortek Hygienic Door Systems Pte Ltd**  
627A Aljunied Road  
BizTech Centre 04-06  
Singapore  
389842

**Tel:** +65 67411787  
**Email:** [info@dortek.com](mailto:info@dortek.com)

## Our Product Range:

- Hinged GRP Doors
- Hygienic FRP Doors
- Fire Doors
- X-ray Rated Doors
- Glass Doors
- Hermetically Sealing Doors
- Crash / Traffic Doors
- Industrial Doors
- Windows and Vision Panels
- Transfer and Trolley Hatches

